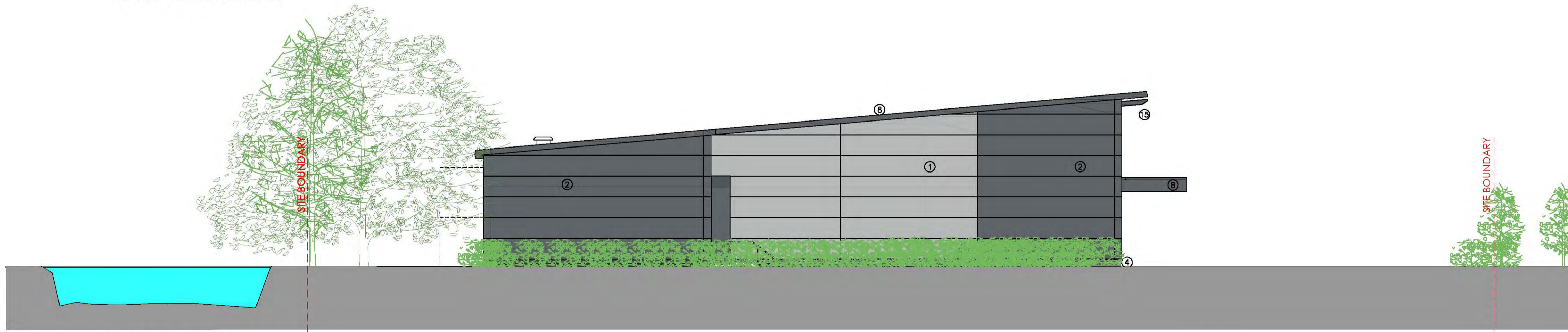




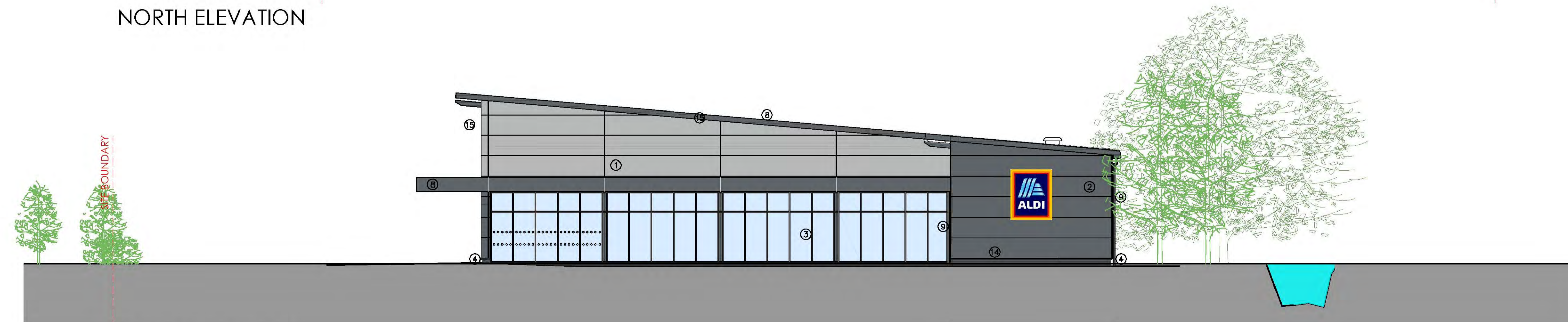
WEST ELEVATION



EAST ELEVATION



NORTH ELEVATION



SOUTH ELEVATION

- EXTERNAL FINISHES**
- ① KINGSPAN KS1000MR METALLIC SILVER CLADDING RAL 9006
  - ② KINGSPAN KS1000MR ANTHRACITE GREY CLADDING RAL 7016
  - ③ SHOPFRONTS - POLYESTER POWDER COATED ALUMINIUM (RAL 7016)
  - ④ BLOCKLEYS BRICK LTD. 'CHARCOAL' BRICKWORK WITH TARMAC Y14 (BLACK COLOURED MORTAR)
  - ⑤ ENTRANCE - POLYESTER POWDER COATED ALUMINIUM (RAL 7016 ANTHRACITE)
  - ⑥ STEEL ESCAPE DOORS - POLYESTER POWDER COATED COLOUR GREY (RAL 7016) (FRAME COLOUR RAL 7016)
  - ⑦ WINDOWS - POLYESTER POWDER COATED ALUMINIUM (RAL 7016)
  - ⑧ FASCIAS - POWDER COATED ALUMINIUM TO BS8496 RAL 7016
  - ⑨ RAINWATER GOODS POLYESTER POWDER COATED ALUMINIUM (RAL 7016)
  - ⑩ KINGSPAN KS 1000 RW 80MM THICK TRAPEZOIDAL COMPOSITE ROOF PANELS ON PURLINS. ALL TO ACHIEVE MIN U-VALUE OF 0.25W/M<sup>2</sup>K. COLOUR TO BE ANTHRACITE GREY RAL 7016.
  - ⑪ SECTIONAL OVERHEAD DOOR - PVF COATED STEEL (RAL 7016)
  - ⑫ TROLLEY BAY RAILS - SATIN FINISH STAINLESS STEEL
  - ⑬ HANDRAILS - GALVANISED TUBULAR STEEL
  - ⑭ PVF2 COATED ALUMINIUM PRESSED DRIP FLASHING. COLOUR METALLIC SILVER RAL 9006.
  - ⑮ ALL EXPOSED STEEL WORK TO BE PAINTED STEELGUARD 244 FINISH COAT TO BE GLOSS FINISH RAL 7016 ANTHRACITE GREY.

Rev	Date	Description	Rev	By	CHK'd By
Project Title		EKco Business Park Priory Crescent Southend on Sea SS2 6PP			
Client		ALDI STORES LIMITED - CHELMSFORD			
Status		PLANNING			
Scale		1:125		Drawing Size A1	
Date		17/09/2018	Drawn By	JJJ	Checked
Drawing Title		PROPOSED ELEVATIONS			
Job/Draw No		2238-CHE-111		Rev -	
<input type="checkbox"/> 2 St. Johns North, Wakefield, WF1 3QA t. 01924 271600 <input type="checkbox"/> Carvers Warehouse, 77 Dale Street, Manchester, M1 2HG t. 0161 2388555 <input checked="" type="checkbox"/> The Old Factory, 79 High Street, Newport Pagnell, MK16 8AB t. 0118 9507730 <input type="checkbox"/> 101 London Road, Reading, RG1 5BT t. 0118 9507730 <input type="checkbox"/> 10 Great Court, St Christophers Place, London, W1U 1JJ t. 0207 4091215					

